

PART OF THE NW.1/4, OF SECTION 2, T.5N., R.2W., S.L.B. & M.

718

LOCHERS LANDING SUBDIVISION

IN WEST HAVEN CITY

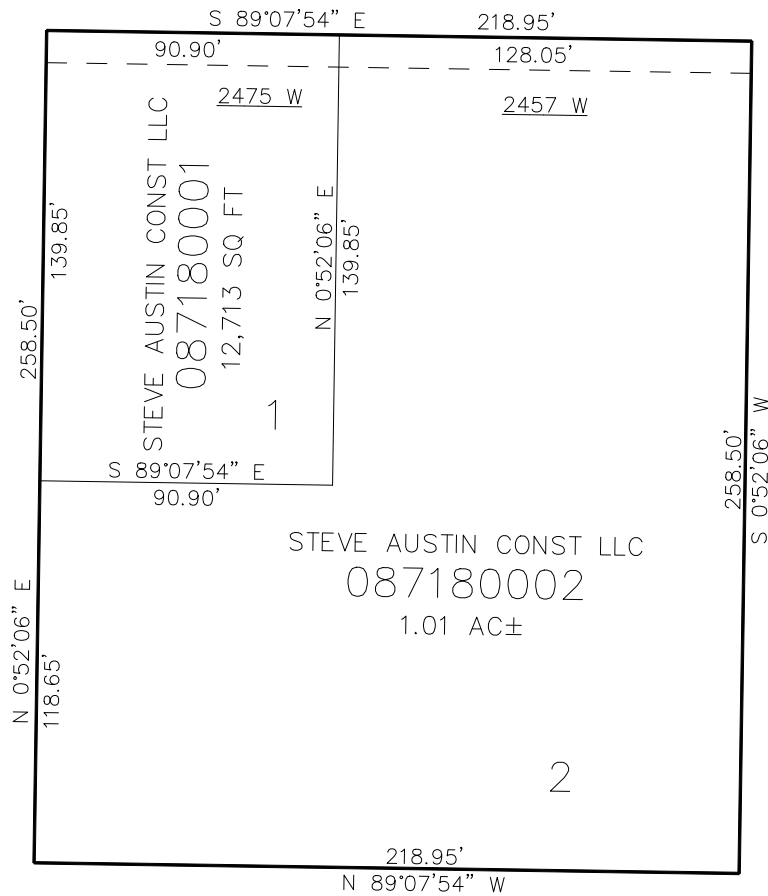
TAXING UNIT: 286

SCALE 1" = 30'

SEE PAGE 28

3300 SOUTH ST

SEE PAGE 28



SEE PAGE 28

10' UTILITY & DRAINAGE EASEMENTS EACH
SIDE OF PROPERTY LINES AS INDICATED
BY DASHED LINES EXCEPT AS OTHERWISE
SHOWN.

SEE PAGE 28

FOR COMPLETE SURVEY DATA SEE
ORIGINAL DEDICATION PLAT IN
BOOK 98, PAGE 49 OF RECORDS.